

SCALE 1"=9"

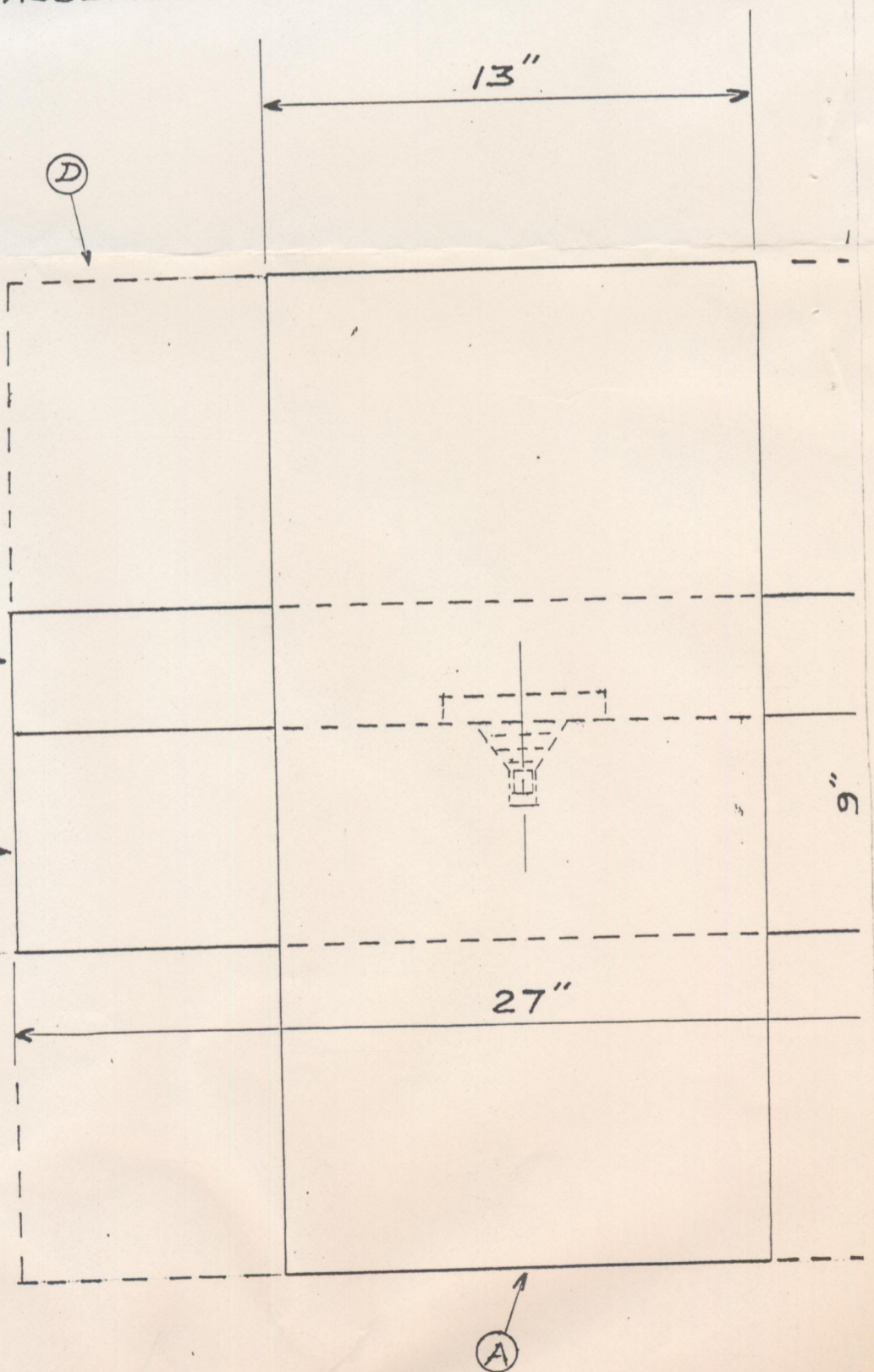
REDUCED SCALE - ASSEMBLY

NOTES:

Ⓓ AND Ⓔ OPTIONAL.

AN ALTERNATE ARRANGEMENT HAS Ⓑ AND Ⓒ OF 13" LENGTH, (THE THICKNESS OF Ⓐ) WITH A YOKE SURROUNDING Ⓐ AND CONTACTING BOTH ENDS OF Ⓑ AND Ⓒ.

ANOTHER OPTION, WITH Ⓑ AND Ⓒ OF 13" AND Ⓐ ON ITS SIDE, IS TO USE RENTAL TIME ON INDUSTRIAL HYDRAULIC PRESS - AGAINST THE ENDS OF Ⓑ AND Ⓒ.



47004674